

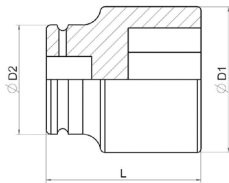
SOQUETES E ACESSÓRIOS DE IMPACTO 1"

Soquetes de Impacto Sextavados 1"

ASME B107.2



MEDIDAS E DESTAQUES:



CONTINUAÇÃO - SOQUETES DE IMPACTO SEXTAVADOS 1"

CÓDIGO	MEDIDA			D1 (mm)	D2 (mm)	L (mm)
ST34824SC	36MM	4	0,742	56,5	54	66
ST34825SC	37MM	4	0,755	58	54	66
ST34826SC	38MM	4	0,781	59	54	66
ST34827SC	39MM	4	0,778	60	54	66
ST34828SC	40MM	4	0,796	61	54	66
ST34829SC	41MM	4	0,853	62,5	54	68
ST34830SC	42MM	4	0,861	64	54	68
ST34831SC	43MM	4	0,894	65	54	70
ST34832SC	44MM	4	0,921	66	54	70
ST34833SC	45MM	4	0,958	68	54	70
ST34834SC	46MM	4	1,012	69	54	72
ST34835SC	47MM	4	1,035	70	54	72
ST34836SC	48MM	4	1,145	71,5	54	76
ST34837SC	49MM	4	1,083	72	54	76
ST34838SC	50MM	4	1,119	74	54	76
ST34839SC	51MM	2	1,207	75	54	80
ST34840SC	52MM	2	1,327	76,5	54	80
ST34841SC	53MM	2	1,373	78	54	80
ST34842SC	54MM	2	1,364	79	54	80
ST34843SC	55MM	2	1,453	80	54	84
ST34844SC	56MM	2	1,506	82	54	84
ST34845SC	57MM	2	1,520	83	54	84
ST34846SC	58MM	1	1,548	84	54	84
ST34847SC	59MM	1	1,706	85	54	88
ST34848SC	60MM	1	1,747	86,5	54	88
ST34849SC	63MM	1	1,761	90	54	88
ST34850SC	65MM	1	1,937	92,5	54	92

EMBALAGEM

CAIXA