

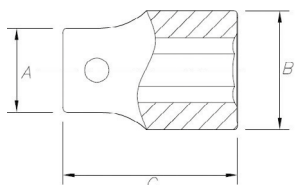
# SOQUETES E ACESSÓRIOS DE IMPACTO 3/4"

## Soquetes de Impacto Sextavados 3/4"

DIN ISO 1711-2 / DIN ISO 691 / DIN 3121 / DIN 3129



### MEDIDAS E DESTAQUES



Garantia para Sempre



CÓDIGO	MEDIDA			A (mm)	B (mm)	C (mm)
84830BX	19MM	5	0,235	44,0	32,0	50,0
84831BX	20MM	5	0,233	44,0	33,5	50,0
84832BX	21MM	5	0,239	44,0	34,5	50,0
84833BX	22MM	5	0,249	44,0	35,6	50,0
84834BX	23MM	5	0,249	44,0	37,5	50,0
84835BX	24MM	5	0,246	44,0	38,3	50,0
84836BX	25MM	5	0,267	44,0	40,0	50,0
84837BX	26MM	5	0,297	44,0	40,7	50,0
84838BX	27MM	5	0,285	44,0	42,0	53,0
84839BX	28MM	5	0,330	44,0	44,0	53,0
84840BX	29MM	5	0,320	44,0	45,0	53,0
84841BX	30MM	5	0,368	44,0	46,0	53,0
84843BX	32MM	5	0,364	44,0	48,0	56,0
84844BX	33MM	5	0,411	44,0	50,0	56,0
84847BX	36MM	5	0,472	44,0	53,0	56,0
84848BX	37MM	5	0,483	44,0	55,0	56,0
84849BX	38MM	3	0,499	44,0	56,0	56,0
84852BX	41MM	3	0,618	44,0	58,0	62,0
84857BX	46MM	3	0,815	44,0	67,0	65,0
84861BX	50MM	3	1,117	54,0	71,0	72,0
84770BX	54MM	3	1,236	54,0	78,0	72,0
84771BX	55MM	3	1,247	54,0	78,0	74,0
84772BX	60MM	3	1,454	54,0	83,0	75,0
84800BX	3/4"	5	0,226	38,0	30,0	51,0
84801BX	13/16"	5	0,238	38,0	35,0	51,0
84802BX	7/8"	5	0,243	38,0	36,0	51,0
84803BX	15/16"	5	0,251	38,0	38,0	51,0
84804BX	1"	5	0,306	38,0	38,0	52,0
84805BX	1.1/16"	5	0,290	38,0	38,0	52,0
84806BX	1.1/8"	5	0,320	44,0	44,0	52,0
84807BX	1.3/16"	5	0,366	44,0	46,0	52,0
84808BX	1.1/4"	5	0,343	44,0	48,0	52,0
84809BX	1.5/16"	5	0,403	44,0	50,0	54,0
84810BX	1.3/8"	5	0,444	44,0	52,0	54,0
84811BX	1.7/16"	5	0,451	44,0	53,0	54,0
84812BX	1.1/2"	5	0,473	44,0	53,0	57,0
84813BX	1.9/16"	3	0,571	44,0	58,0	58,0
84814BX	1.5/8"	3	0,608	44,0	60,0	58,0
84815BX	1.11/16"	3	0,733	44,0	62,0	62,0
84816BX	1.3/4"	3	0,762	44,0	64,0	62,0
84817BX	1.13/16"	3	0,870	44,0	67,0	68,0

## CONTINUAÇÃO - SOQUETES DE IMPACTO SEXTAVADOS 3/4"

CÓDIGO	MEDIDA			A (mm)	B (mm)	C (mm)
84818BX	1.7/8"	3	0,586	44,0	68,0	68,0
84820BX	2"	3	0,734	44,0	71,0	71,0
84822BX	2.1/8"	3	0,826	54,0	77,0	71,0
84823BX	2.3/16"	3	0,814	54,0	77,0	71,0
84824BX	2.1/4"	3	0,902	54,0	80,0	73,0
84826BX	2.3/8"	3	0,957	54,0	84,0	75,0

EMBALAGEM

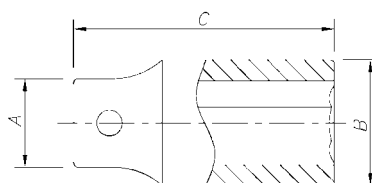
CAIXA

## Soquetes de Impacto Sextavados Longos 3/4"

DIN ISO 1711-2 / DIN ISO 691 / DIN 3121 / DIN 3129





### MEDIDAS E DESTAQUES



Garantia para Sempre



CÓDIGO	MEDIDA			A (mm)	B (mm)	C (mm)
84777BX	19MM	5	0,360	44,0	32,0	85,0
84778BX	20MM	5	0,371	44,0	33,0	85,0
84779BX	21MM	5	0,378	44,0	35,0	85,0
84780BX	22MM	5	0,402	44,0	36,0	85,0
84781BX	23MM	5	0,415	44,0	33,0	85,0
84782BX	24MM	5	0,410	44,0	38,0	85,0
84783BX	25MM	5	0,429	44,0	39,0	85,0
84784BX	26MM	5	0,487	44,0	41,0	85,0
84785BX	27MM	5	0,470	44,0	42,0	85,0
84786BX	28MM	5	0,529	44,0	44,0	85,0
84787BX	29MM	5	0,458	44,0	45,0	85,0
84788BX	30MM	5	0,573	44,0	46,0	85,0
84789BX	32MM	5	0,535	44,0	48,0	85,0
84790BX	33MM	5	0,614	44,0	50,0	85,0
84791BX	36MM	5	0,684	44,0	51,0	85,0
84792BX	37MM	5	0,699	44,0	52,0	85,0
84793BX	38MM	3	0,708	44,0	53,0	85,0
84794BX	41MM	3	0,801	44,0	58,0	85,0
84795BX	46MM	3	1,259	44,0	67,0	95,0
84796BX	50MM	3	1,388	54,0	71,0	96,0
84797BX	54MM	3	1,520	54,0	78,0	96,0
84798BX	55MM	3	1,664	54,0	80,0	98,0
84799BX	60MM	3	1,935	54,0	85,0	105,0
84863BX	3/4"	5	0,364	38,0	30,0	85,0
84864BX	13/16"	5	0,378	38,0	33,0	85,0
84865BX	7/8"	5	0,402	38,0	34,0	85,0
84866BX	15/16"	5	0,414	40,0	38,0	85,0
84867BX	1"	5	0,500	40,0	40,0	85,0
84868BX	1.1/16"	5	0,472	40,0	40,0	85,0
84869BX	1.1/8"	5	0,517	40,0	44,0	85,0
84870BX	1.3/16"	5	0,567	44,0	46,0	85,0
84871BX	1.1/4"	5	0,537	44,0	47,0	85,0
84872BX	1.5/16"	5	0,605	44,0	47,0	85,0
84873BX	1.3/8"	5	0,686	44,0	50,0	85,0
84874BX	1.7/16"	5	0,671	44,0	53,0	85,0
84875BX	1.1/2"	3	0,697	44,0	56,0	85,0

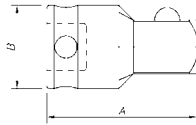
CÓDIGO	MEDIDA			A (mm)	B (mm)	C (mm)
84876BX	1.9/16"	3	0,766	44,0	56,0	85,0
84877BX	1.5/8"	3	0,783	44,0	60,0	85,0
84878BX	11/16"	3	0,979	44,0	62,0	85,0
84879BX	1.3/4"	3	1,023	44,0	64,0	85,0
84880BX	1.13/16"	3	1,081	44,0	66,0	85,0
84881BX	1.7/8"	3	1,087	44,0	68,0	85,0
84883BX	2"	3	1,243	54,0	70,0	85,0
84773BX	2.1/8"	3	1,586	54,0	77,0	95,0
84774BX	2.3/16"	3	1,504	54,0	77,0	95,0
84775BX	2.1/4"	3	1,650	54,0	80,0	95,0
84776BX	2.3/8"	3	1,794	54,0	84,0	95,0
<b>EMBALAGEM</b>						
CAIXA						

## Adaptador de Impacto 3/4"

DIN 3121





### MEDIDAS E DESTAQUES



 Garantia para Sempre

 CR-MO

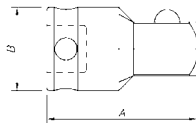
CÓDIGO	MEDIDA			A (mm)	B (mm)
84887BX	3/4" X 1"	5	0,437	63,0	44,0
<b>EMBALAGEM</b>					
CAIXA					

## Redutor de Impacto 3/4"

DIN 3121





### MEDIDAS E DESTAQUES



 Garantia para Sempre

 CR-MO

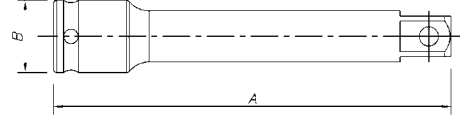
CÓDIGO	MEDIDA			A (mm)	B (mm)
84888BX	3/4" X 1/2"	5	0,343	5,0	44,0
<b>EMBALAGEM</b>					
CAIXA					

## Extensões de Impacto 3/4"

DIN 3121





### MEDIDAS E DESTAQUES



 Garantia para Sempre

 CR-MO

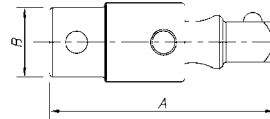
CÓDIGO	MEDIDA			A (mm)	B (mm)
84885BX	6"	5	0,819	152,0	44,0
84886BX	10"	3	1,195	254,0	44,0
<b>EMBALAGEM</b>					
CAIXA					

## Junta Universal de Impacto 3/4"

DIN 3121





### MEDIDAS E DESTAQUES



 Garantia para Sempre

 CR-MO

CÓDIGO	MEDIDA			A (mm)	B (mm)
84889BX	3/4"	5	0,641	89,0	44,0
<b>EMBALAGEM</b>					
CAIXA					

