

Soquetes e Acessórios de Impacto

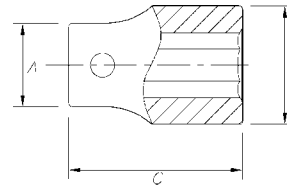
SOQUETES E ACESSÓRIOS DE IMPACTO 1/2"

Soquetes de Impacto Sextavados 1/2"

DIN ISO 1711-2 / DIN ISO 691 / DIN 3121 / DIN 3129



MEDIDAS E DESTAQUES



Garantia para Sempre



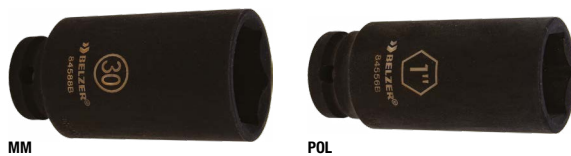
CÓDIGO	MEDIDA			A (mm)	B (mm)	C (mm)
84565BX	6MM	5	0,060	25,0	12,0	38,0
84519BX	7MM	5	0,060	25,0	13,0	38,0
84520BX	8MM	5	0,066	25,0	14,5	38,0
84521BX	9MM	5	0,065	25,0	15,6	38,0
84522BX	10MM	5	0,065	25,0	16,7	38,0
84523BX	11MM	5	0,064	25,0	18,0	38,0
84524BX	12MM	5	0,062	25,0	19,0	38,0
84525BX	13MM	5	0,079	25,0	20,2	38,0
84526BX	14MM	5	0,078	25,0	21,5	38,0
84527BX	15MM	5	0,087	25,0	23,0	38,0
84528BX	16MM	5	0,087	25,0	25,0	38,0
84529BX	17MM	5	0,093	25,0	25,0	38,0
84530BX	18MM	5	0,105	25,0	27,0	38,0
84531BX	19MM	5	0,106	25,0	28,0	38,0
84532BX	20MM	5	0,125	25,0	30,0	38,0
84533BX	21MM	5	0,121	25,0	30,0	40,0
84534BX	22MM	5	0,146	27,0	32,0	40,0
84535BX	23MM	5	0,138	28,0	33,0	42,0
84536BX	24MM	5	0,161	30,0	34,0	42,0
84537BX	25MM	5	0,183	30,0	36,0	44,0
84538BX	26MM	5	0,178	30,0	36,0	44,0
84545BX	27MM	5	0,213	30,0	38,0	46,0
84539BX	28MM	5	0,241	30,0	38,0	46,0
84540BX	29MM	5	0,232	30,0	40,0	46,0
84541BX	30MM	5	0,238	30,0	42,0	46,0
84542BX	31MM	5	0,274	30,0	42,0	46,0
84543BX	32MM	5	0,267	30,0	44,0	46,0
84650BX	33MM	3	0,320	35,0	46,0	46,0
84651BX	34MM	3	0,353	35,0	46,0	46,0
84652BX	35MM	3	0,350	35,0	48,0	46,0
84544BX	36MM	3	0,369	35,0	50,0	46,0
84653BX	37MM	3	0,600	44,0	50,0	46,0
84654BX	38MM	3	0,650	44,0	51,0	46,0
84498BX	1/4"	5	0,066	25,0	13,0	38,0
84499BX	5/16"	5	0,068	25,0	15,0	38,0
84500BX	3/8"	5	0,066	25,0	16,0	38,0
84501BX	7/16"	5	0,064	25,0	18,0	38,0
84502BX	1/2"	5	0,062	25,0	20,0	38,0

CONTINUAÇÃO - SOQUETES DE IMPACTO SEXTAVADOS 1/2"

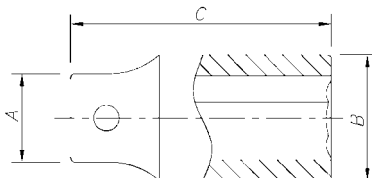
CÓDIGO	MEDIDA			A (mm)	B (mm)	C (mm)
84503BX	9/16"	5	0,078	25,0	22,0	38,0
84504BX	5/8"	5	0,086	25,0	25,0	38,0
84505BX	11/16"	5	0,091	25,0	26,0	38,0
84506BX	3/4"	5	0,105	25,0	28,0	38,0
84507BX	13/16"	5	0,124	25,0	30,0	40,0
84508BX	7/8"	5	0,144	27,0	32,0	40,0
84509BX	15/16"	5	0,162	27,0	34,0	44,0
84510BX	1"	5	0,183	27,0	36,0	44,0
84511BX	1.1/16"	5	0,146	27,0	38,0	44,0
84512BX	1.1/8"	5	0,154	30,0	40,0	46,0
84513BX	1.3/16"	5	0,165	30,0	42,0	46,0
84514BX	1.1/4"	5	0,175	30,0	44,0	46,0
84515BX	1.5/16"	5	0,189	35,0	46,0	46,0
84516BX	1.3/8"	5	0,195	35,0	47,0	46,0
84517BX	1.7/16"	5	0,204	35,0	48,0	46,0
84518BX	1.1/2"	5	0,225	35,0	50,0	46,0
EMBALAGEM						
TAG						

Soquetes de Impacto Sextavados Longos 1/2"

DIN ISO 1711-2 / DIN ISO 691 / DIN 3121 / DIN 3129



MEDIDAS E DESTAQUES



CÓDIGO	MEDIDA			A (mm)	B (mm)	C (mm)
84657BX	6MM	5	0,068	25,0	16,0	82,0
84658BX	7MM	5	0,068	25,0	17,0	82,0
84566BX	8MM	5	0,156	25,0	14,5	82,0
84567BX	9MM	5	0,156	25,0	15,6	82,0
84568BX	10MM	5	0,154	25,0	16,7	82,0
84569BX	11MM	5	0,151	25,0	18,0	82,0
84570BX	12MM	5	0,147	25,0	19,0	82,0
84571BX	13MM	5	0,177	25,0	20,2	82,0
84572BX	14MM	5	0,169	25,0	21,5	82,0
84573BX	15MM	5	0,172	25,0	24,0	82,0
84574BX	16MM	5	0,192	25,0	25,0	82,0
84575BX	17MM	5	0,197	25,0	26,0	82,0
84576BX	18MM	5	0,186	25,0	26,0	82,0
84577BX	19MM	5	0,223	25,0	28,0	82,0
84578BX	20MM	5	0,262	25,0	30,0	82,0
84579BX	21MM	5	0,244	25,0	30,0	82,0
84580BX	22MM	5	0,285	25,0	32,0	82,0
84581BX	23MM	5	0,276	25,0	32,0	82,0
84582BX	24MM	5	0,314	30,0	34,0	82,0
84585BX	27MM	5	0,202	30,0	38,0	82,0
84588BX	30MM	5	0,222	30,0	42,0	82,0
84655BX	1/4"	5	0,152	25,0	13,0	82,0
84656BX	5/16"	5	0,157	25,0	15,0	82,0
84546BX	3/8"	5	0,153	25,0	16,0	82,0
84547BX	7/16"	5	0,149	25,0	18,0	82,0
84548BX	1/2"	5	0,146	25,0	20,0	82,0
84549BX	9/16"	5	0,167	25,0	22,0	82,0
84550BX	5/8"	5	0,185	25,0	22,0	82,0

CONTINUAÇÃO - SOQUETES DE IMPACTO SEXTAVADOS LONGOS 1/2"

CÓDIGO	MEDIDA			A (mm)	B (mm)	C (mm)
84551BX	11/16"	5	0,191	25,0	26,0	82,0
84552BX	3/4"	5	0,223	25,0	28,0	82,0
84553BX	13/16"	5	0,247	30,0	30,0	82,0
84554BX	7/8"	5	0,284	30,0	32,0	82,0
84555BX	15/16"	5	0,321	30,0	34,0	82,0
84556BX	1"	5	0,362	30,0	36,0	82,0

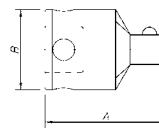
EMBALAGEM
TAG

Redutor de Impacto 1/2"

DIN 3121



MEDIDAS E DESTAQUES



CÓDIGO	MEDIDA			A (mm)	B (mm)
84643BX	1/2" X 3/8"	5	0,065	38,0	25,0

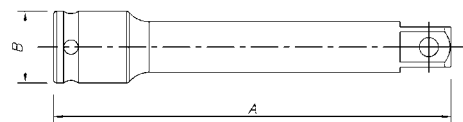
EMBALAGEM
TAG

Extensões de Impacto 1/2"

DIN 3121



MEDIDAS E DESTAQUES



CÓDIGO	MEDIDA			A (mm)	B (mm)
84645BX	3"	5	0,131	75,0	25,0
84646BX	5"	5	0,228	125,0	25,0
84644BX	10"	5	0,653	250,0	25,0

EMBALAGEM
TAG